

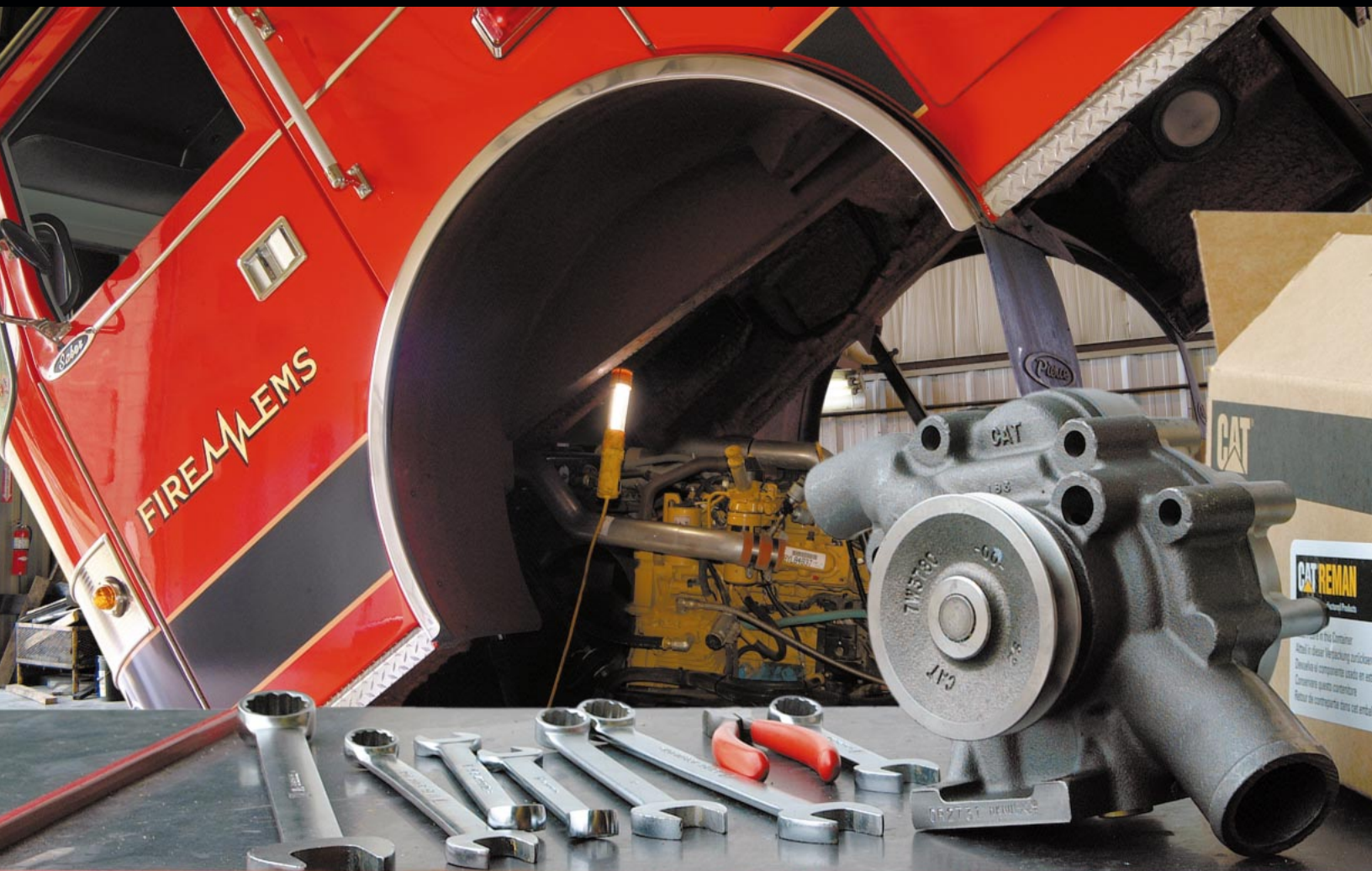
## Cat® Reman Water Pumps



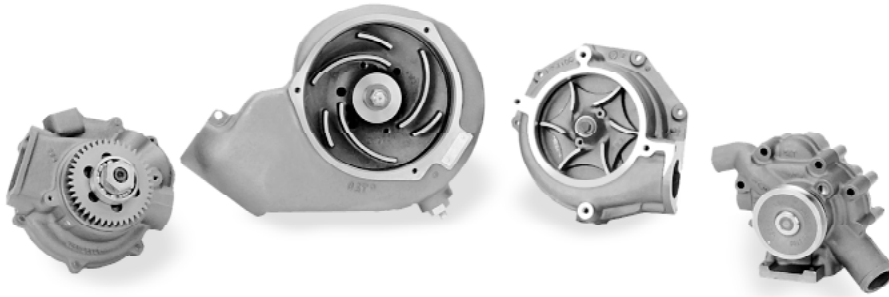
Cat Gasket and Seal Kits feature a modular design for specific engine model and serial number arrangements.

### *Maintain cooling efficiency and reduce repair costs*

- Superior quality—promote positive coolant flow to prevent overheating and prolong engine life
- Latest technology—include updates to key components, such as water and oil seals
- Proven reliability—meet same grueling test specifications as new Cat water pumps
- Excellent value—offer immediate, off-the-shelf availability at a fraction-of-new price
- Safe investment—feature a same-as-new parts warranty



# Cat Reman Water Pumps



- Hardened bearing retainer improves bearing retention.
- Improved oil and coolant seals help provide longer life.
- Stainless steel shaft resists corrosion.
- Redesigned impeller improves durability and increases coolant flow around the water seal.
- Latest engineering updates help ensure same-as-new quality.

## *Fast, dependable, competitively priced repairs*

When your cooling system needs service, Cat Reman Water Pumps get you back to work quickly, reliably, and affordably. We stock a full line of pumps for fast repair turnaround, all with a same-as-new parts warranty and priced at a fraction of the cost of new parts. For added convenience, gasket kits are now included for certain engine models (see chart below).

## *Quality remanufacturing process*

Cat Reman Water Pumps are built to the same performance standards as new Cat pumps, and remanufacturing processes are strict to help ensure same-as-new quality.

- Shafts are polished and remanufactured or replaced with new.
- Impellers are replaced as needed.
- All pumps are updated with the latest design seals and tested for leaks to help ensure dependability, output, and longer life.

## *Core acceptance criteria*

To receive a full core refund, a water pump core must meet these simple, visual criteria:

- An acceptable Caterpillar, Midland, or Sloan part number
- Fully assembled and complete with no visibly cracked or broken housings or pulleys
- No non-operational damage (mishandling, excessive rust, pitting, or corrosion)

### Reman Water Pumps for most Cat engines

Engine Family	Includes
<b>3116 3126 3176 3306 C-10/C-12</b>	Mounting gasket kit for typical installation.
<b>3406 C-15/C-16</b>	
<b>D330 D333C D343 D346/348/349</b>	—
<b>D353 D379 D398/399</b>	—
<b>1100 3100 3114 3408 3412</b>	—
<b>3500 3600</b>	—

## Two ways to extend water pump life



**Cat Extended Life Coolant (ELC™)** is formulated, approved, and recommended for Cat engines—lasting twice as long as conventional coolants and requiring no supplemental coolant additives (SCAs). Plus, extensive testing and field reporting prove it improves overall water pump durability and inhibits corrosion of internal pump components.



**S-O-S™ Coolant Analysis** is a quick, low-cost way to evaluate

the effectiveness of your coolant, check for contaminants, and monitor the condition of the cooling system and other major engine systems. It helps you correct problems before they lead to costly failures and reduce maintenance downtime and cost.